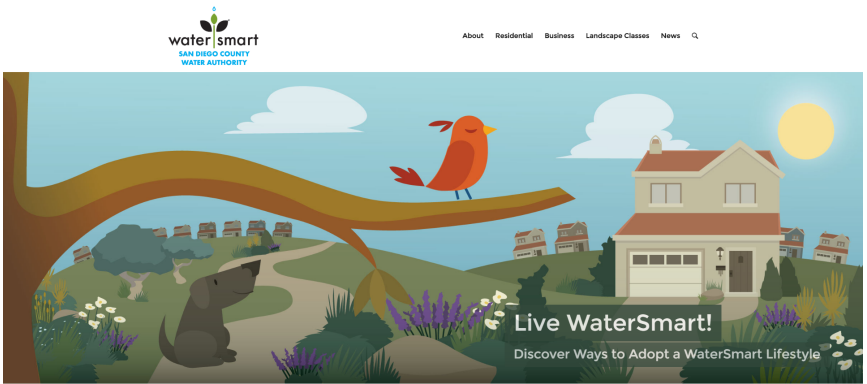


RESOURCES FOR LANDSCAPE RETROFITS

Design ideas, professional assistance, incentives and financing

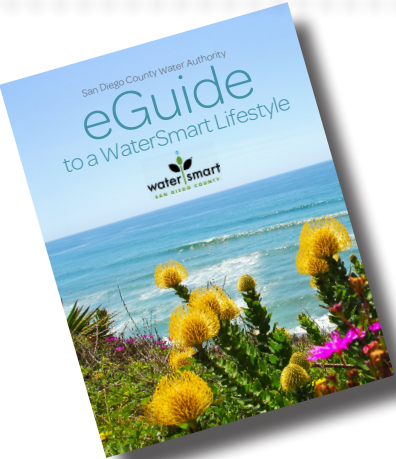
For residential programs, classes, incentives and more, go to [WaterSmartSD.org](https://www.watersmart.org).



Residential
Landscape Education Incentives
In this section you'll find great tips on how to create your water-wise home and garden. Look for sample photos, a list of resources, FAQs, and various incentives offered to help make it all come true. Our list of sample gardens will show you locations to get truly inspired. [Read about water-wise landscapes.](#)

Business
Programs & Services Incentives
Businesses can be water-smart too. From landscaping to indoor plumbing, we've collected the best advice for you. View the programs and services available for commercial landscaping and check what incentives are available. You'll also find information on how to offset business expenses.

Landscape Makeover Program
Four-Week Series Three-Month Workshops
This unique program offers intensive education and guidance for replacing your thirsty landscape with a water-efficient, thrifty landscape.



eGuide to a WaterSmart Lifestyle

The digital magazine, "eGuide to a WaterSmart Lifestyle," is your go-to resource for water-efficient living in San Diego County. [WaterSmartSD.org](https://www.watersmart.org) offers:

- Inspirational plant and garden photos
- Landscape ideas
- Helpful videos
- Plant finders
- Design tools
- Garden calculators
- Links to certified landscape professionals
- And much more ...

WaterSmart Gardens

There's nothing like experiencing the beauty, texture and scents of WaterSmart gardens in person. Several neighborhood nurseries and regional gardens across San Diego County are dedicated to showcasing climate-appropriate plants and landscapes. Take advantage of tours, classes and one-on-one design consultations offered by these resources. Great places to start are:

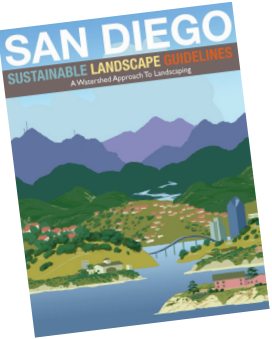
- The Water Conservation Garden at Cuyamaca College
[TheGarden.org](https://www.thegarden.org)
- San Diego Botanic Garden
[SanDiegoBotanicGarden.org](https://www.sandiegobotanicgarden.org)

WaterSmart Resources

[WaterSmartSD.org](https://www.watersmart.org) is an excellent online source for water-use efficiency programs, incentives, tools and more. Use the interactive locator tool to find information specific to local water agencies.

San Diego County Plant Finder

Another resource to help upgrade landscapes is [WaterSmartSD.org](https://www.watersmart.org). It has thousands of pictures of plants and garden designs that are well-suited to San Diego's Mediterranean climate. ■



Find both of these resources on our website at [WaterSmartSD.org](https://www.watersmart.org)



San Diego County Water Authority
Our Region's Trusted Water Leader

4677 Overland Ave.
San Diego, California
92123-1233
858.522.6700

[sdcwa.org](https://www.sdcwa.org)



@sdcwa



Printed on recycled paper



San Diego County Water Authority
Our Region's Trusted Water Leader



DIVERSIFICATION
Enhancing Water Supply Reliability



Create a Budget for Landscape Retrofits

Know what you can afford with your landscape before you start

Of all the water-efficient upgrades homeowners can make, landscape retrofits are the most expensive. However, in the long run, replacing turf with a water-efficient landscape saves water, reduces maintenance and increases your home's value.

But do your landscape ideas match your budget? According to the Association of Professional Landscape Designers, homeowners should budget 5 to 10 percent of their home's market value for the installation or renovation of the entire landscape and expect up to a

200 percent return on the investment. However, resourceful homeowners can find ways to get a quality landscape for less. A budget will help you decide which of your design ideas stay, which don't, and which need tweaking.

It Pays to be WaterSmart!

Visit [WaterSmartSD.org](https://www.watersmart.org) to learn about incentives and discounts, including rebates on high-efficiency irrigation equipment. The site also lists free landscaping classes offered around the San Diego region.

COST ESTIMATES

LandscapingNetwork.com, a California-based source of landscaping information for homeowners and professionals, can help you get a handle on project costs. Most prices are based on national averages, and Southern California prices may be higher. Call local designers, contractors or supply centers to discuss pricing.

Designer or Architect \$500 - 16,000

Hardscape/sq. ft; professionally installed

Gravel	\$6-35
Concrete	\$6-17
Pavers	\$10-25
Brick	\$12-22
Flagstone	\$15-30

Fencing/linear ft; professionally installed

Chain Link	\$12-14
Wood (6 feet high)	\$13-19
Wrought iron	\$22
Vinyl	\$25

Irrigation System/zone; professionally installed Sprinkler \$1,000; Drip \$650-750

Amenities professionally installed

Fire pit	\$600-7,000
Lighting	\$3,800-5,000
Patio cover	\$3,000-30,000
Deck	\$16-35 sq. ft.
Outdoor kitchen	\$2,000-100,000

Plants (price per plant)

Perennials (1 gallon)	\$4-6
Shrubs (5 gallon)	\$20-25
Trees (15 gallon)	\$35-50
Trees (36-inch box)	\$150-350

Stretch Your Budget

Here are a few ideas to make your new garden more affordable.

1 Do It Yourself

Do what you are capable of yourself. Take advantage of no-cost or low-cost classes, design workshops and one-on-one design consultations.



2 Use Less-Expensive Materials

Reduce the quantity or size of plant material. Divide existing plants onsite and replant them throughout the project. Go with gravel instead of flagstone; use rocks you find on your property to make a fire pit; and shop estate sales for outdoor furniture and give your found treasure a new coat of paint.

3 Upgrade Your Irrigation

Avoid the cost of installing new irrigation pipe by keeping your existing irrigation zones and upgrading your sprinklers. Upgrades can be as simple as replacing spray nozzles with rotary nozzles and drip emitters, and adding a smart controller.

4 Go Zone by Zone

Instead of tackling your whole property at once, create your new garden one irrigation zone at a time and spread the cost over two or three years.

REAL PROJECTS, REAL BUDGETS



BEFORE

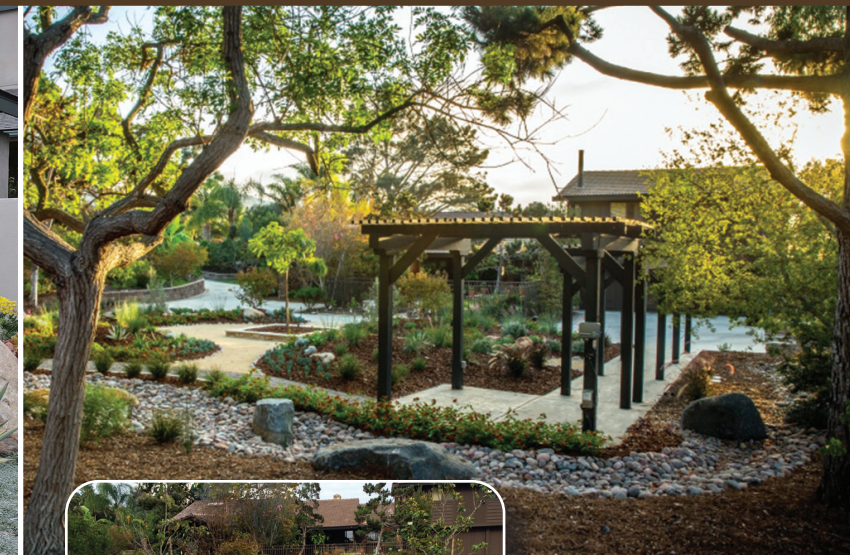
The homeowners saved money by doing much of the work themselves and using cuttings from plants on site.



BEFORE

Photo credit: Schmidt Design Group, Inc.

The use of boulders adds a unique, no-water-use element. Homeowners designed the landscape themselves. Expect to pay a landscape designer about \$800 for a project of this size.

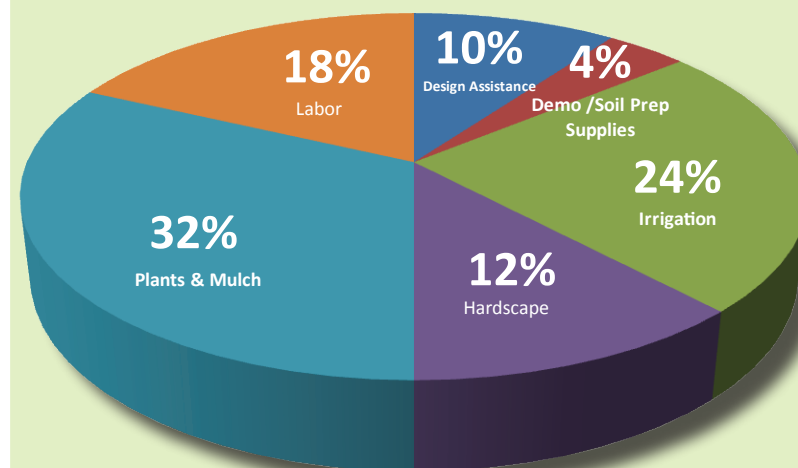


BEFORE

Winding pathways and adaptive native plants resistant to drought create a park-like setting.

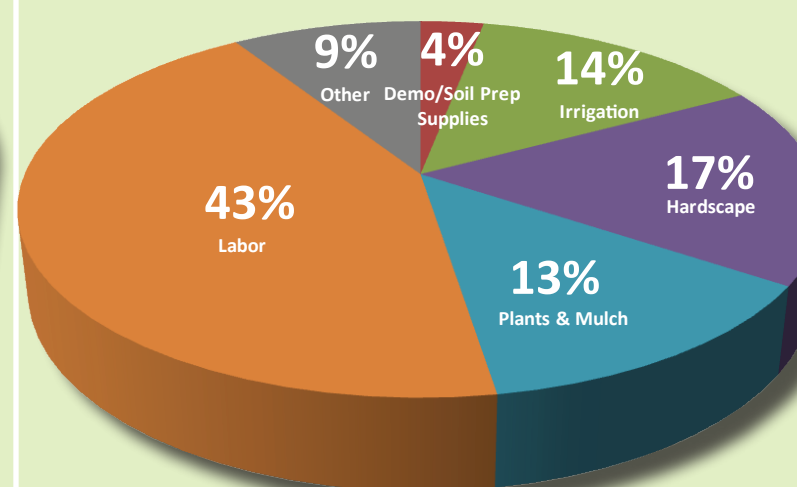
Photo credit: Eco Minded Solutions

Where did the budget go?



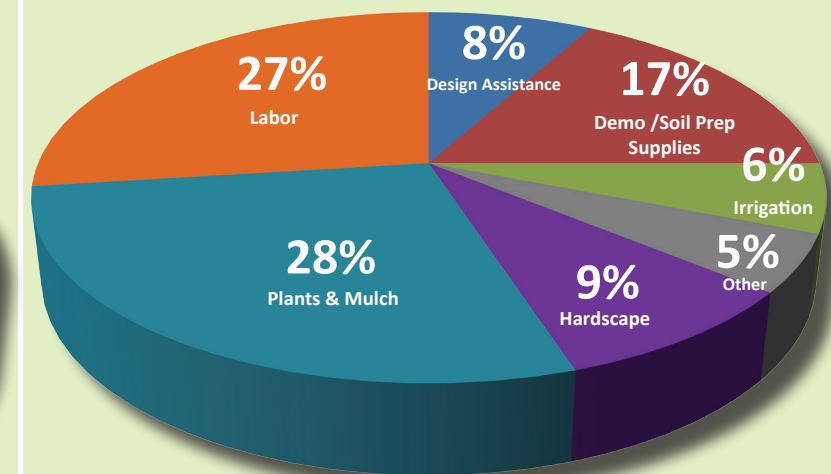
1,600 Sq. Ft.
\$3/Sq. Ft.

Where did the budget go?



630 Sq. Ft.
\$13/Sq. Ft.

Where did the budget go?



2,923 Sq. Ft.
\$10/Sq. Ft.

